

A scenic view of a river in Yanagawa City, Japan. Two boats, one larger and one smaller, are on the water, carrying people. The river is surrounded by lush green trees and foliage, creating a serene and natural environment. The water reflects the surrounding greenery and the boats.

Waterfront Conservation and Eco-tourism in Yanagawa City

Prof. Yoshiyuki Osakaya
Muroran Institute of
Technology, Hokkaido, Japan

Suphawadee



Osakaya

白秋のふるさと 柳川 2012

Relation between Bangkok and Fukuoka City



Fukuoka Prefecture



Location of Yanagawa City





Yanagawa City

Access to Yanagawa City



Origin of Yanagawa

Yanagawa
柳 川
 
willow river

Yanagawa City means town along
the river or canal with willow trees.

Outline of Yanagawa City

Administrative area : 76.88 square kilo meters

Population : 70,985 (31st December 2012)

Household : 24,863 (31st December 2012)

Birth per month : 30 to 50

Death per month : 80 to 120

Persons moved in per month : 100 to 150

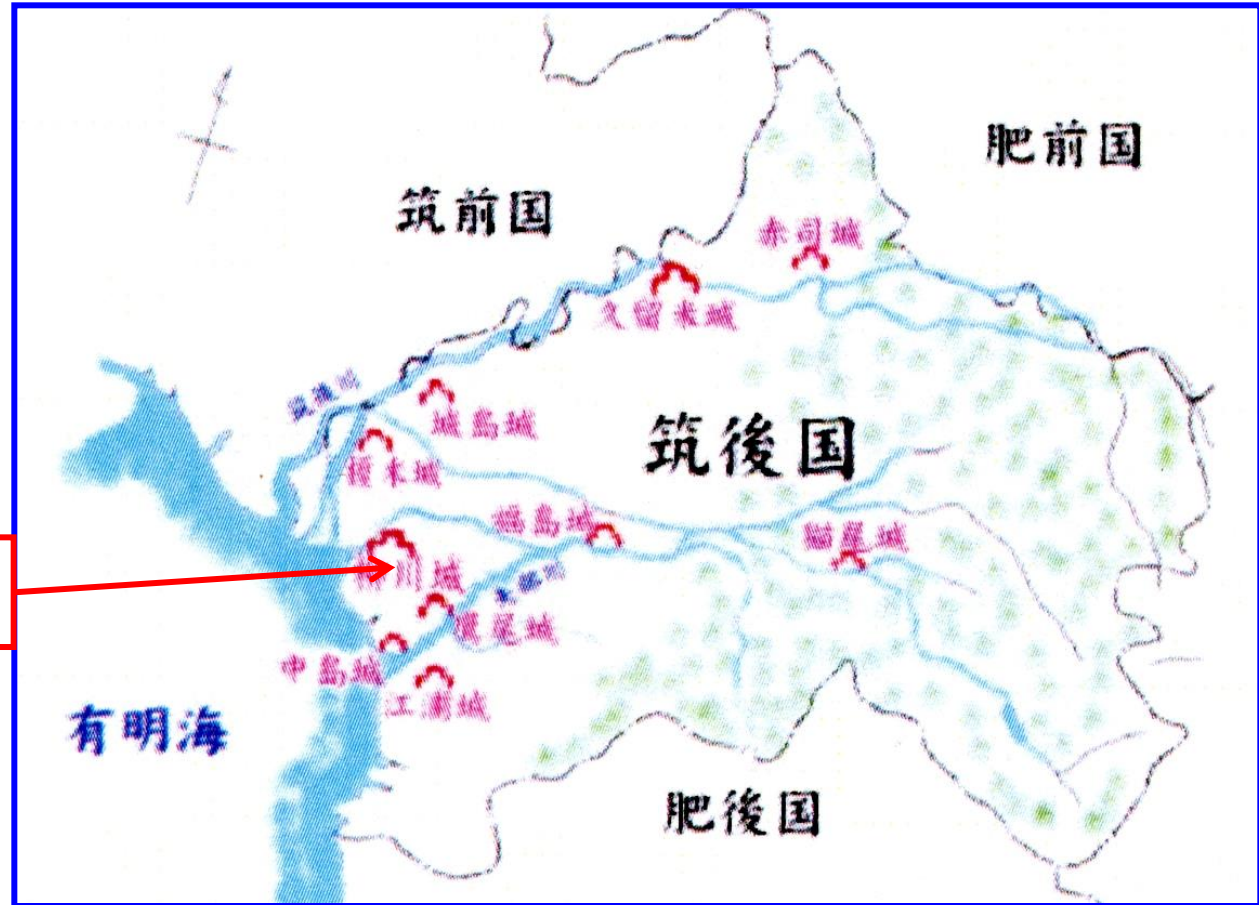
Persons moved out per month : 100 to 150

Tourists per year : about 1.2 to million

Symbol tree of City : willow

Symbol flowers of City : sweet flag, wistaria

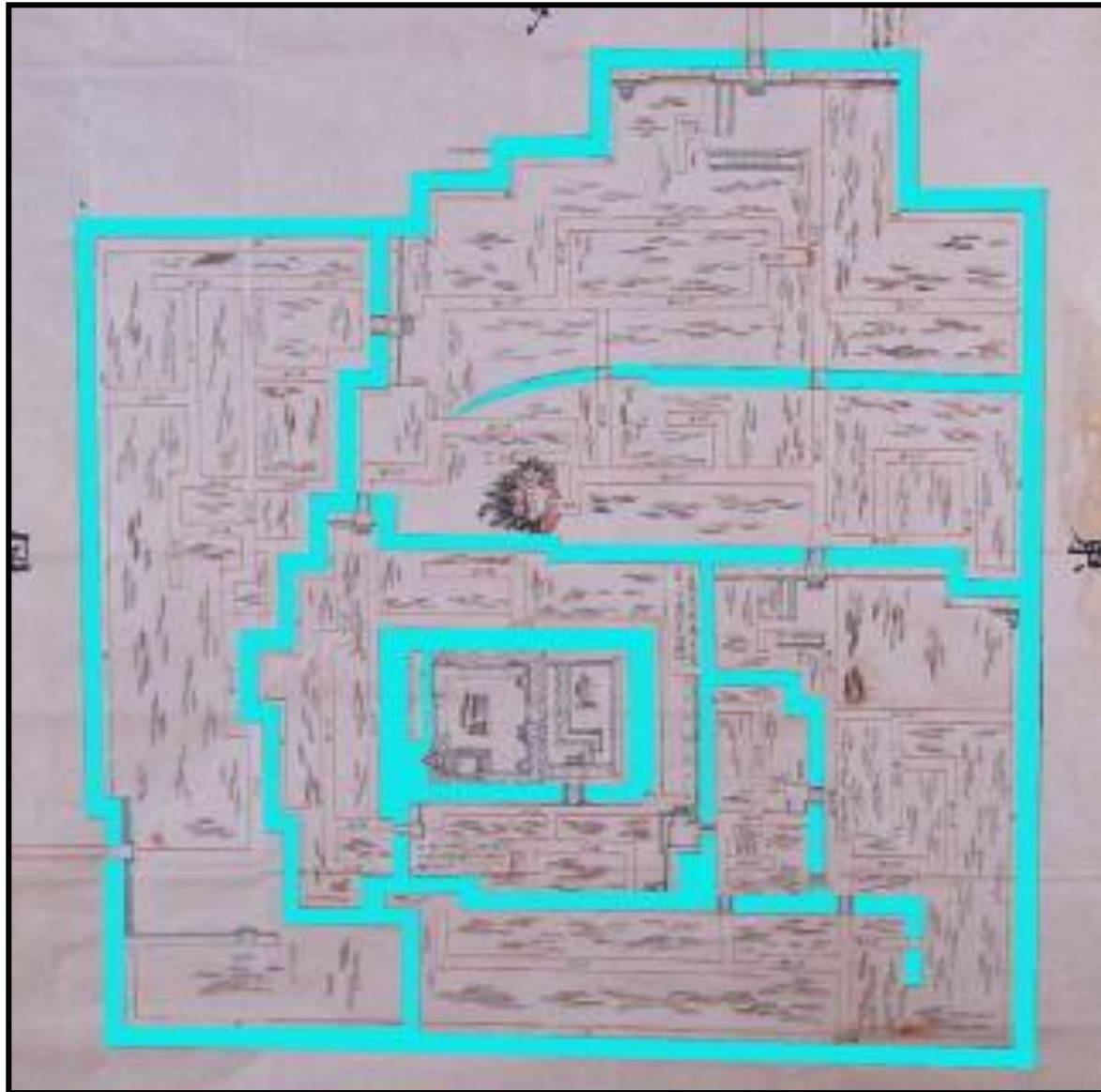
During 16th Century to beginning of 17th Century, there were many castles in Japan.



Yanagawa Castle

Old Map of Yanagawa and Neighboring Area

Plan of Yanagawa Castle



Tenshukaku (Main Building) of Yanagawa Castle

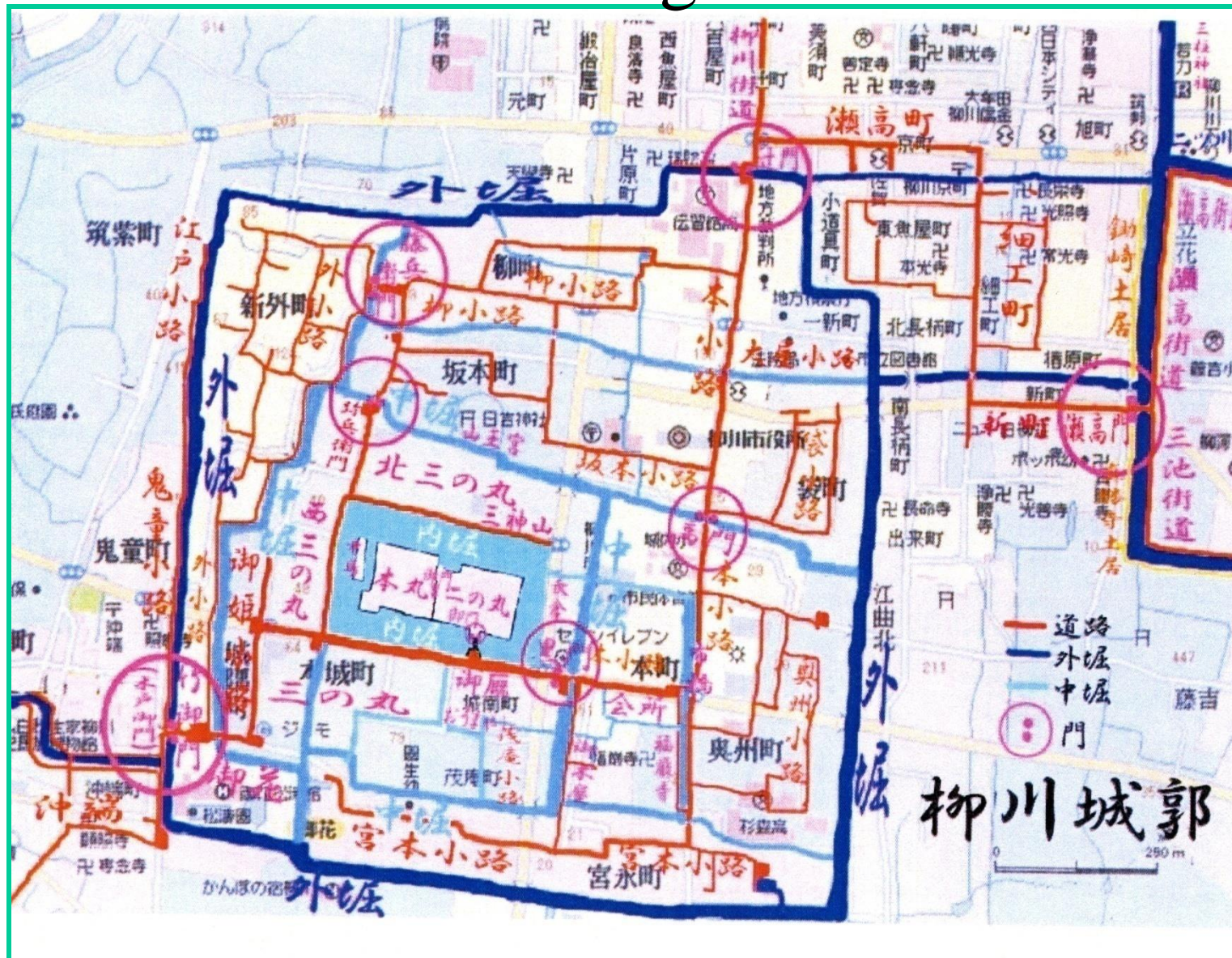


Yanagawa Castle



Castle Town = Castle + Downtown

Castle town of Yanagawa

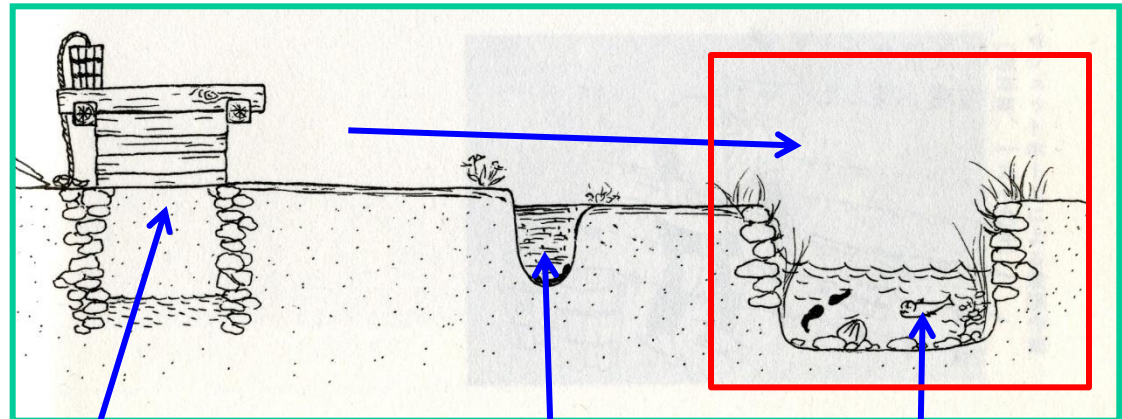


Water treatment before Japanese high economic Growth



Farmers took care of canals and river.

Old drainage system in town



water treatment tank

ditch

canal

During Japanese High Economic Growth, especially 1960s and former of 1970s, the river and canals in Yanagawa were polluted by illegal throwing away garbage and wasted water of daily life. Quality of water became worse and worth. There also existed bad smell problem.



Garbage by illegally throwing away to the canal

In 1977, “Water Quality Improvement Plan” was made and “Water Clean-up Project” started. The leader was Tsutae Hiromatsu who was a head of water supply division of Yanagawa City office.

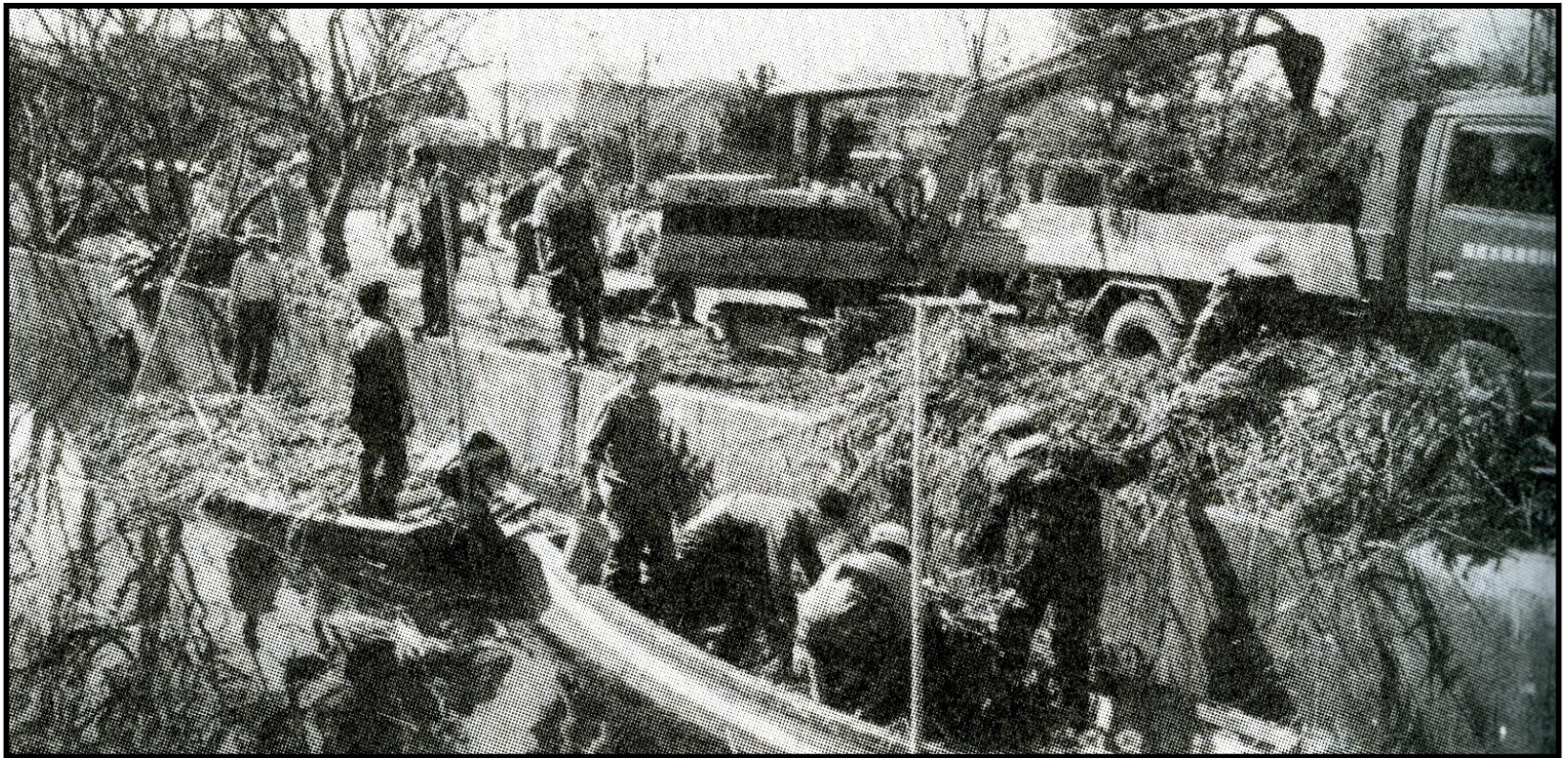


Supply of oxygen by jet tube



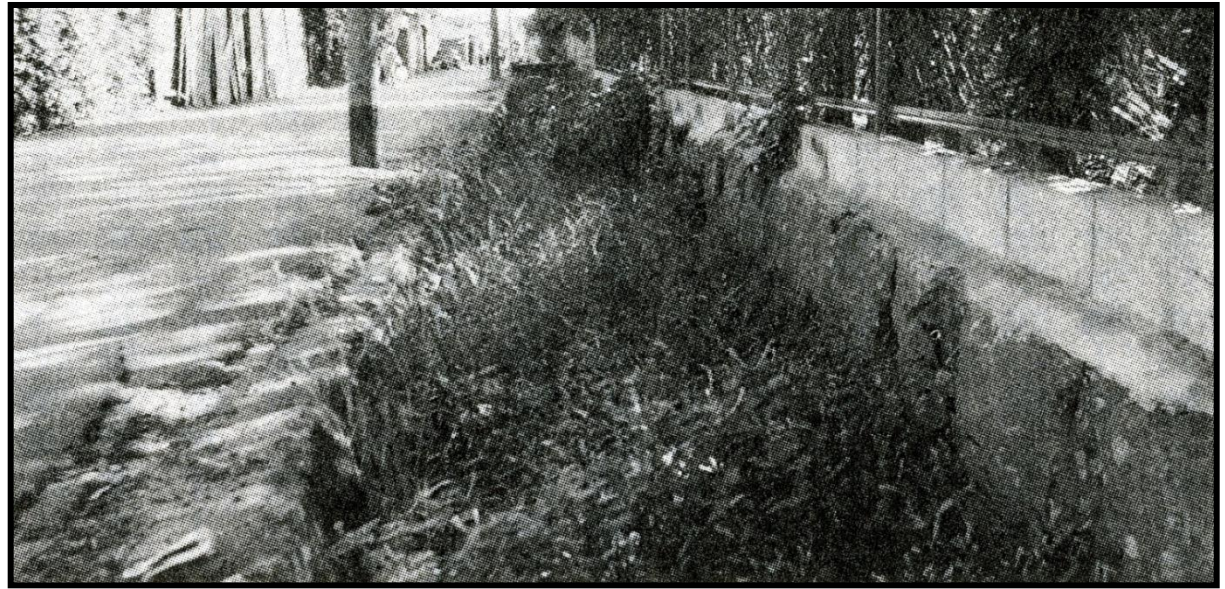
Removal of sludge

Mr. Hiromatsu proposed Citizens' Participation in "Water Clean-up Project" in order to take back attractive canals, moats and rivers.



Latter half of 1970s

Before
Clean-up
Project



After
Clean-up
Project



Before
Clean-up
Project



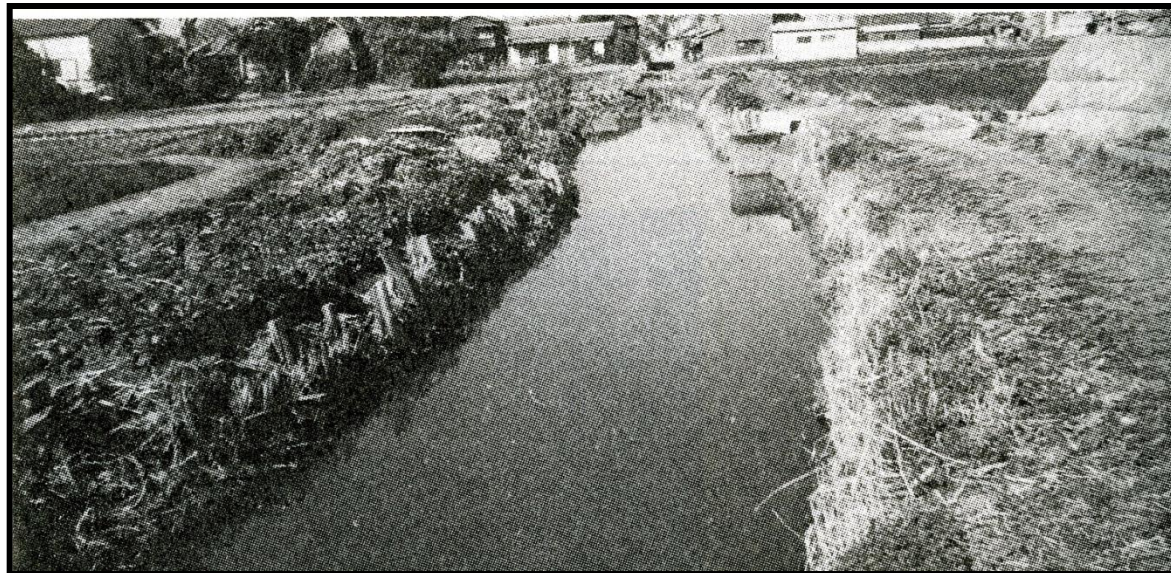
After
Clean-up Project



Before
Clean-up
Project

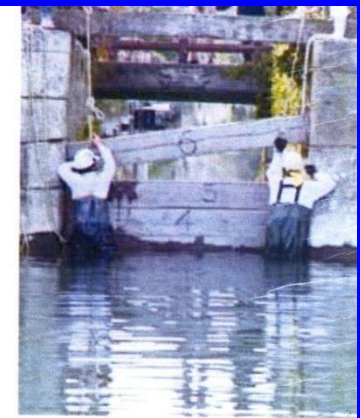
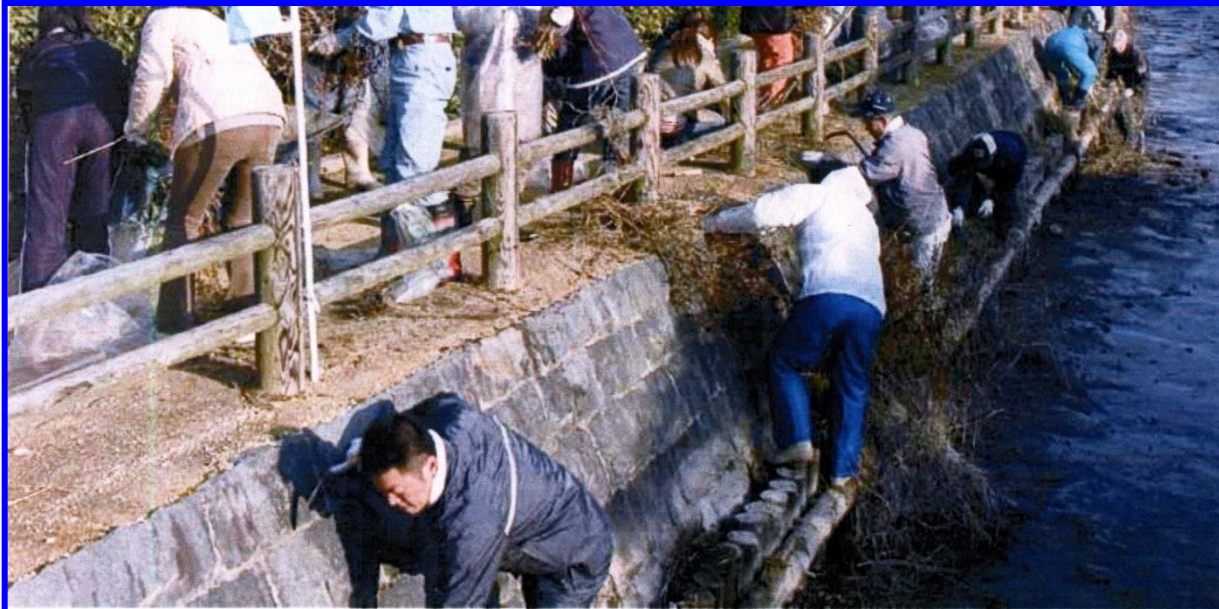


After
Clean-up
Project

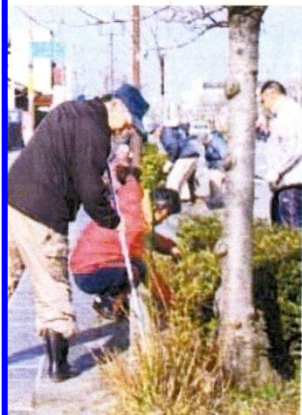


Citizens' Participation in Clean-up Project

Now!



【上】6枚の板でせき止められた新町水門【左】掘割の水を抜くため、二丁井樋を開けた【下】2、3日で水位が下がり、川底が顔を出した



【右】舟上から見える掘割の石垣を丁寧に清掃する川下り業者【左】歩道の植え込みなどを参加者が一斉に作業した【下】一斉清掃によって1時間ほどで2トントラック約15台分のごみを回収した



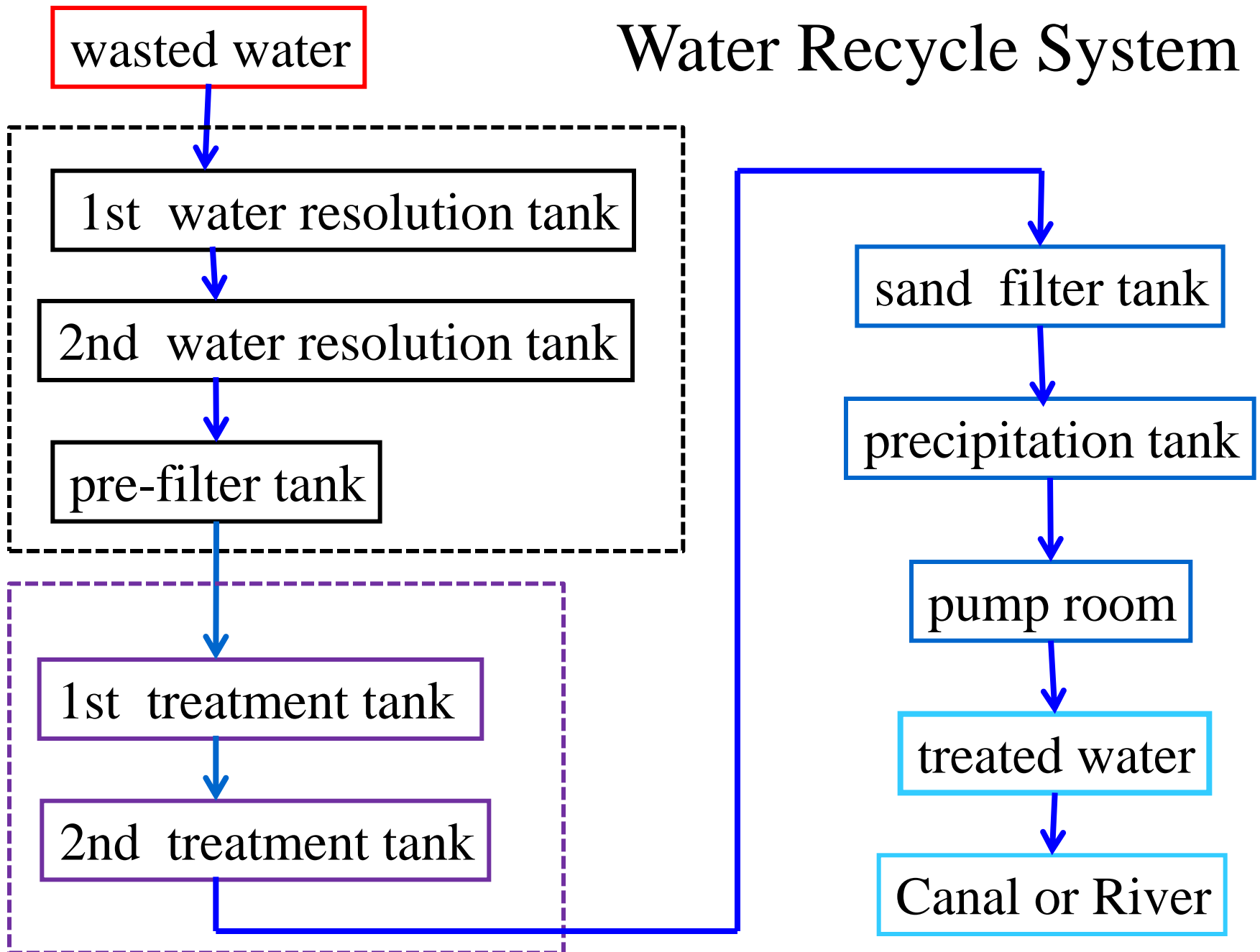
【上】早朝から約2000人が参加した「柳川」堀と道「クリーンアップ大作戦」。掘割や歩道などを手分けして清掃した【下】子どもたちも大人と一緒に作業した



Eco-tourism in Yanagawa

1. Coexistence with environment
(Principle)
2. Water recycle system
Water quality is the most important.
Citizens' participation
3. Move with low environmental load
 - a. Walking
 - b. Rental bicycle
 - c. Boat without engine

Water Recycle System



Tourist Map of the Central Area of Yanagawa City



Sightseeing

1. Number of tourists is about 1.2 million.
2. Over night tourists was decreasing and became a quarter of year 1997.
3. Decrease of over night tourists made 20 % decrease of Expense within Yanagawa City.

Year	Total tourists thousand	A day's tourists thousand	Over night tourists thousand	Tourists within Prefecture thousand	Tourists out of Prefecture thousand	Expense within Yanagawa million yen
2009	1,156	1,105	51	520	636	4,784
Maximum	1,295		191			5,988
Year	2,004		1997			1,997

Sightseeing Spots (Beat 3)

	Tourists	Income
1. Boat tour	316,483	427
2. Ohana (Villa) Restaurant, Inn, etc.	161,342	81
3. Hakushu Kitahara (Poet)'s parents' home and memorial hall	77,329	28

Boat tour gains 400 to 500 million Yen per year.



narrow part of canal

equipment for fishing







shops along canal

destination of boat trip



Decrease of over night tourists

The reasons are considered as follows;

1. Extension of Highway Network
2. Opening of Kyushu Shin-kansen Railway
3. Opening of Saga Airport
4. Increase of rental car users
5. Deflation Economy in Japan



Saving Travel Expense

Going around many sightseeing spots

Increasing tourists by private cars

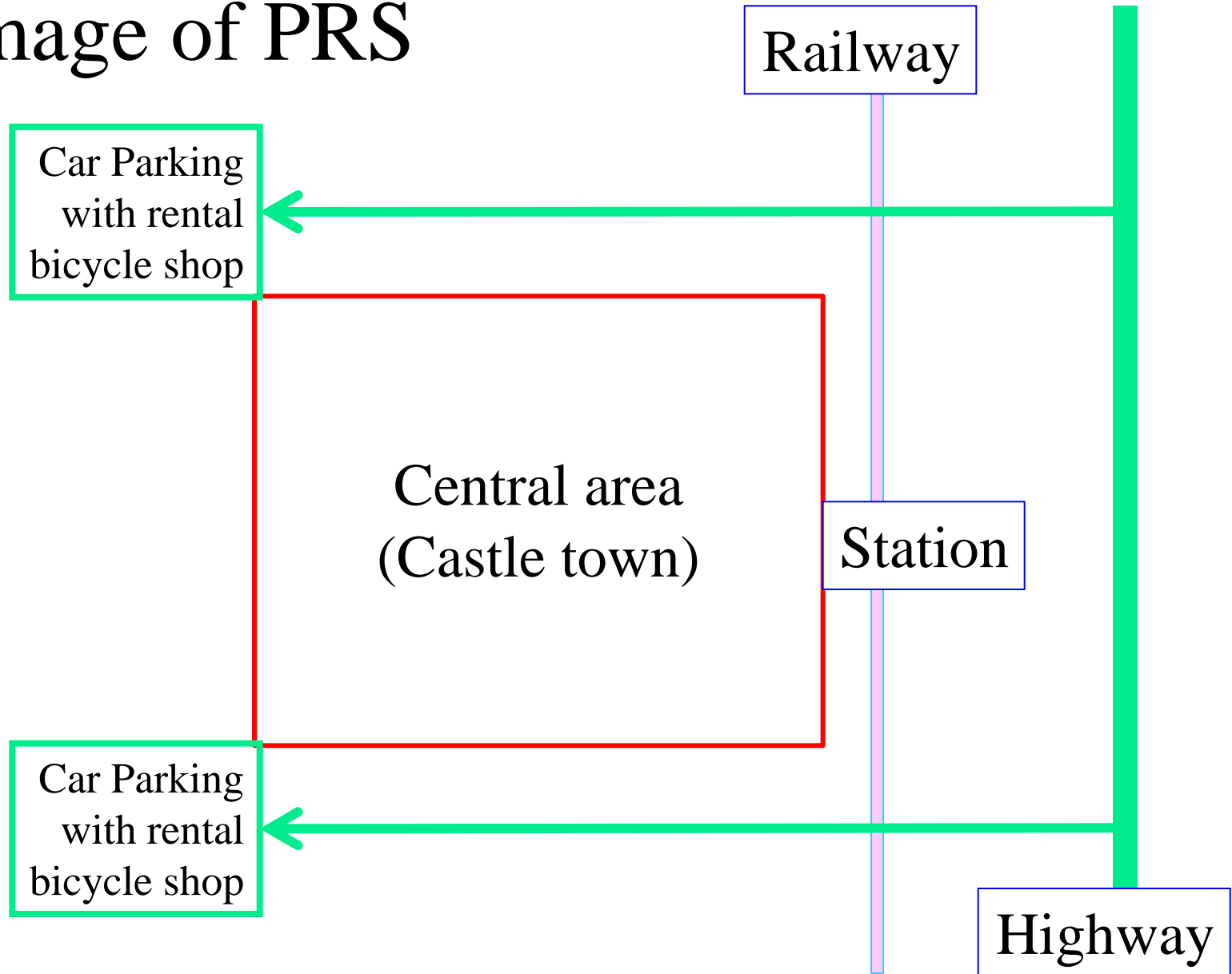
The central area which was castle town has narrow roads and few car parking.

Tourists by private cars gradually increase because of extension of highway network.

“Private car & Rental bicycle System” should be proposed to solve the above mentioned issue.

The image is shown at next slide.

Image of PRS





Boat tour enjoying
Sweet flags in May

Passengers of Canal Boat Tour (monthly)

Month	Passengers	
January	14,519	
February	21,658	
March	41,163	Girl's Day Festival
April	26,952	
May	32,754	
June	23,520	
July	18,437	
August	19,254	
September	30,087	
October	33,457	
November	38,559	
December	16,123	
Total	316,483	

The date of Girls' festival is 3rd March in Japan. In Yanagawa City, the period of the Festival named "Sagemon Festival" is from 11th February to 3rd April . So that passengers of canal boat is most frequent in March. But we can enjoy canal boat tour not only spring but also summer, autumn and even winter. We enjoy plum blossom and cherry blossom in spring. We enjoy sweet flags and willows in summer. We also enjoy coolness and fireworks on boat. We enjoy flowers of wistaria and red and yellow leaves in autumn. We enjoy Japanese "Sake" on boat in winter.

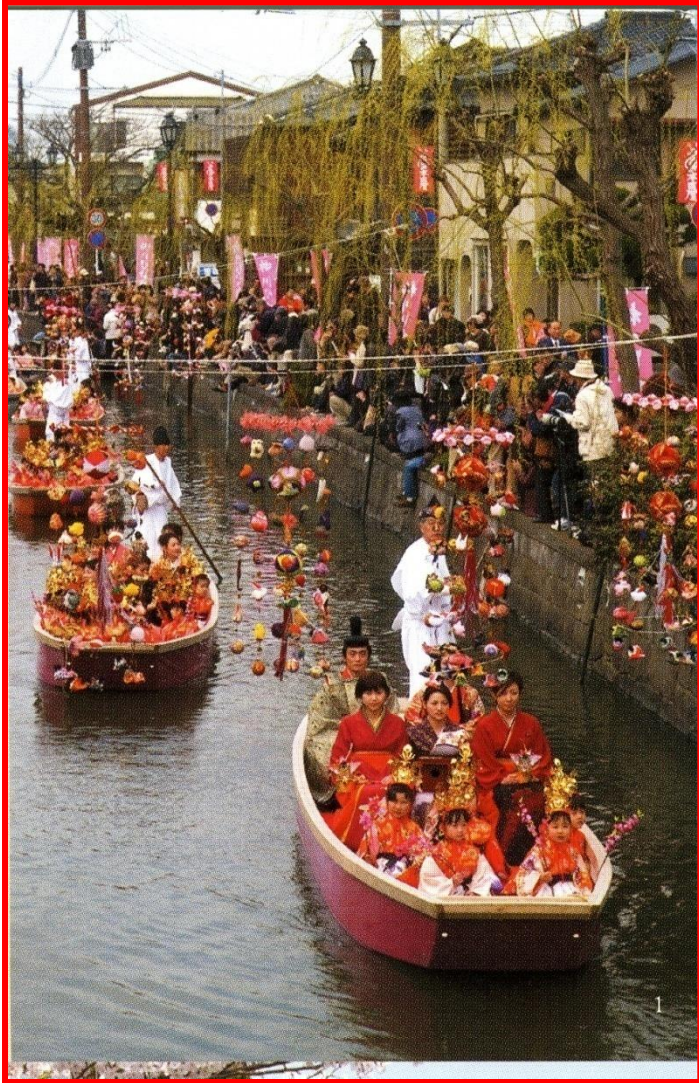
Hina-matsuri (Girls' Festival) on 3rd March

A set of Hina (Dolls)

Sagemon



Sagemon Festival (11th Feb. to 3rd April)



Parade on the water





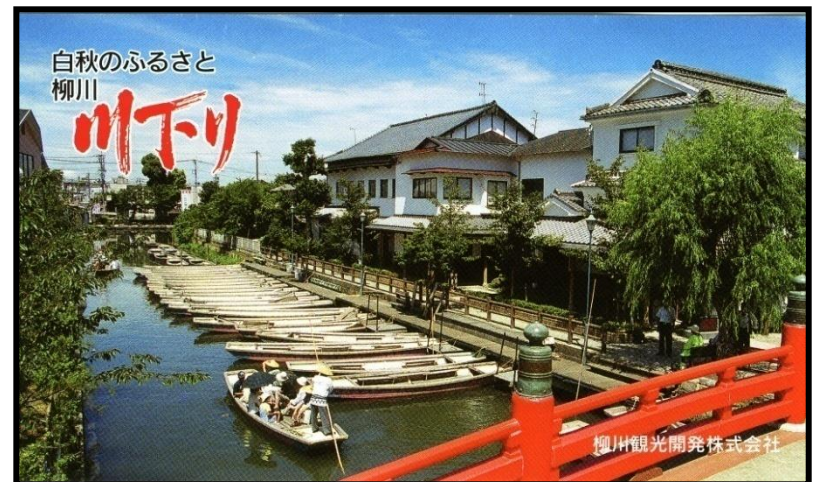
Cherry blossoms

Fireworks



Wistaria Festival

Ticket (Boat Station)



Historical Buildings in Yanagawa

Samurai's House with Garden in the Edo Period



Connected Warehouse I the Meiji Period

Various Festivals in Yanagawa



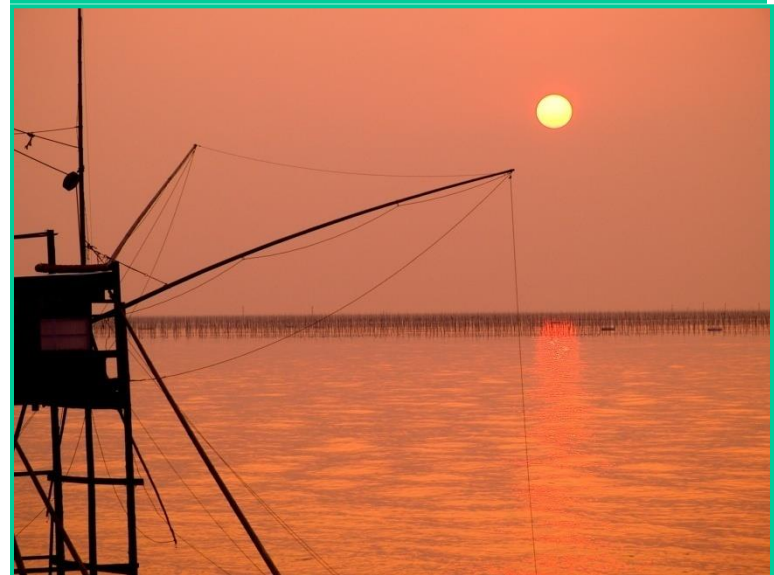
Japanese Garden of Ohana



Foods in Yanagawa



Sightseeing spots in suburban area



Thank you for your attention !